



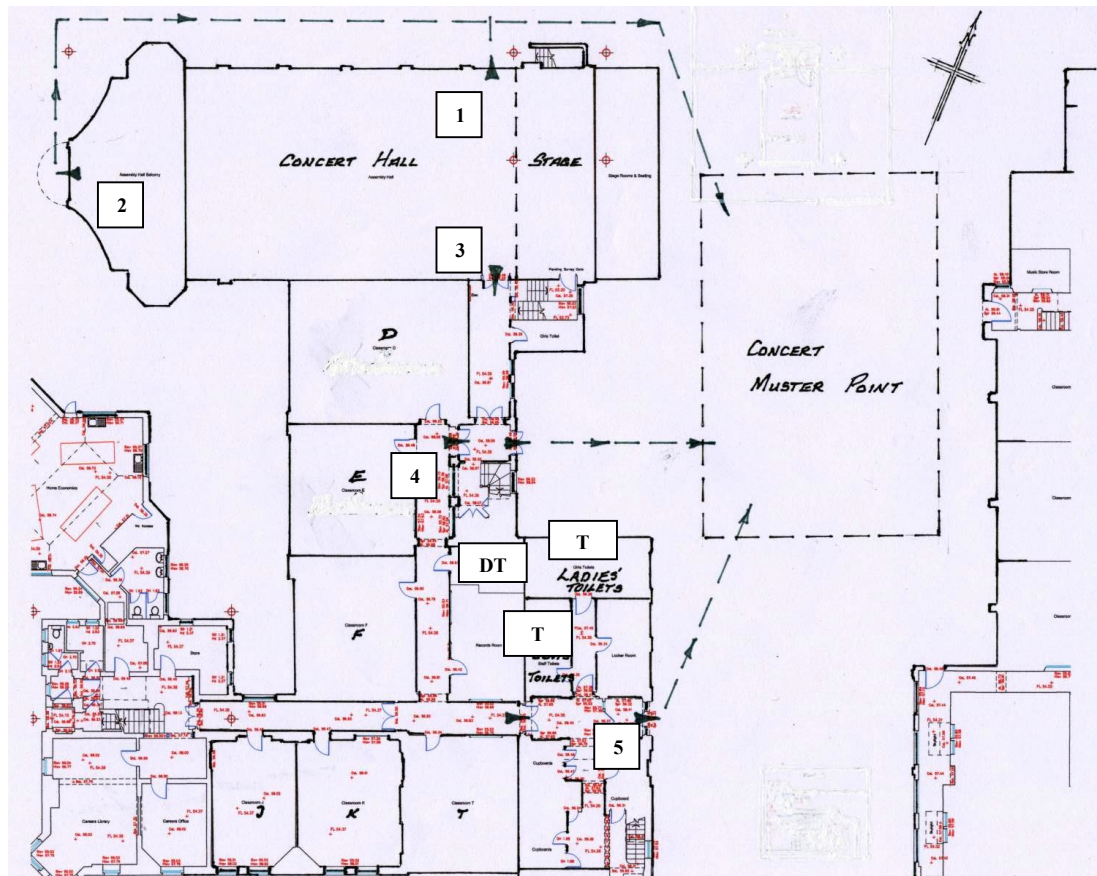
If you, or anyone near you, is taken ill, First Aiders are there to attend if required and are seated in the Concert Hall.

EMERGENCY EVACUATION PROCEDURE

If the alarm sounds, evacuate as quickly, quietly and as orderly as is practical.

Without placing yourself, or anyone else, at risk;-

- Leave the building by the nearest exit without taking extra time to collect possessions.
- Do not divert from the direct route to the “Muster Point” (meeting point).
- Assemble in Groups at the “Muster Point” to enable the attendance to be checked, and
DO NOT LEAVE THE “MUSTER POINT” OR SITE, UNLESS DIRECTED SO TO DO.
- (leaving prior to being directed may lead to others risking their lives searching for you).
- Do not re-enter the building until instructed so to do.



Fire Exit

Evacuation routes

Toilets
T
Toilet for Disabled
DT